

# Prospectus



1557

Tadcaster  
Grammar School

*be your best self*

Tadcaster Grammar School is proud to be part of the **STAR Multi Academy Trust**  
([web.starmat.uk](http://web.starmat.uk))



[www.carbonbalancedpaper.com](http://www.carbonbalancedpaper.com)  
CBP2244

Tadcaster Grammar School aims to be as environmentally conscious as possible. As part of our commitment, this prospectus has been printed on Carbon Balanced Paper. For more information about the Carbon Balanced Paper initiative, please visit [www.carbonbalancedpaper.com](http://www.carbonbalancedpaper.com)

# Welcome

TO TADCASTER GRAMMAR SCHOOL



1557

**Tadcaster**  
Grammar School

Dear parents, carers and young people,

Thank you for taking the time to find out more about our excellent school. I hope this booklet further encourages you to consider applying to Tadcaster Grammar School.

During their seven years with us we want to support each individual to further develop their confidence, ambition and motivation so they can achieve fulfilment in their current and future lives. As such, our curriculum offer is broad, balanced and strengthened through an enviable range of extra-curricular activities. We always encourage our students to immerse themselves in the full life of the school. We all have individual talents and the school experience is designed to find and nurture these, whatever they may be.

We want all students to enjoy, be excited about and make sense of their learning. Students are expected to take a full part in their lessons, to be organised and to conduct themselves in an appropriate manner, which benefits their own learning and that of others. Our classroom areas are stimulating and well-appointed, and staff work endlessly to make the learning relevant to each individual.

Of particular interest to prospective parents and carers would be the caring and nurturing environment within the school which ensures every student is safe, secure and happy. Our truly committed staff devote much time to getting to know our students as individuals. Staff also empathise with the challenges that day-to-day secondary education sometimes presents as well as recognising and celebrating success.

I encourage parents and carers to engage fully with the school with attendance at school events and via consultations we hold regularly. We want you to feel ever more confident that you have made the best possible choice by entrusting your child's care and education to us. Partnership working with parents and carers is a strength of the school and we rely on your consistent support with areas such as student punctuality, attendance, homework and our expectations for behaviour for learning.

I look forward very much to welcoming you to the school.

**Mr A Parkinson** B.Sc (Hons) M.Ed M.Sc  
Headteacher

*be your best self*

# Our heritage

## OUR VISION & OUR CORE VALUES



## OUR HISTORY

The original Tadcaster Grammar School was founded in 1557 by **Owen Oglethorpe**, who was born in Newton Kyme, in order to educate the sons of the poor of Tadcaster. In 1559 (as the Bishop of Carlisle) Owen Oglethorpe, crowned Elizabeth I, on 15th January at Westminster Abbey.

**Henrietta Dawson** (nee Marshall) was born in 1727 - the daughter of a well-known Tadcaster family (plaques to both her father and mother can be found in Tadcaster Church). She spent her married life in Northern Ireland and London, but retained an affection for Tadcaster and, when she died in 1796, she left £11,187 in her will for a perpetual bequest similar to Oglethorpe's - to support poor women from 'respectable families' and to 'instruct' 20 girls aged between 6 and 12 years of age. There was a plan for a school building but initially teaching was carried out in various rented rooms including the old Sunday School in Westgate.

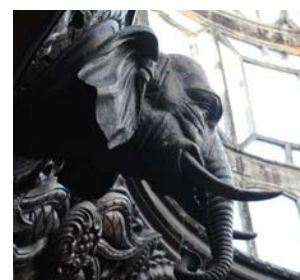
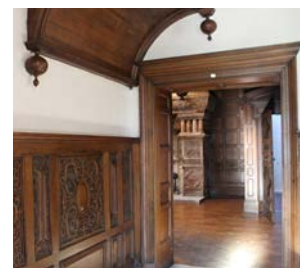
In 1906 Oglethorpe School and Dawson School merged under the official name of Oglethorpe and Dawson's School, however the name Tadcaster Grammar School became commonly used. It built an excellent reputation as a selective Grammar School over the years, becoming one of the first comprehensive schools in the country after 1945. Relocating from the town to the present site one and a half miles to the

west, in 1960, Tadcaster Grammar School became a fully comprehensive school (for ages 11 to 18) eight years later. The design of the building aimed to blend the imposing façade of **Toulston Lodge** with modern architectural styles of the time.

*\*Please see page 4 & 5 to learn how the endowments from our Founders' (Owen Oglethorpe and Henrietta Dawson) continue to contribute to our school and students through the **Oglethorpe & Dawson Educational Foundation**.*

Toulston Hall was built by **Sir Thomas Fairfax** in 1603 (a Parliamentarian during the Civil War but a supporter of the Restoration). Whilst the hall was pulled down long before the end of the 1800s, the Lodge was used as the dowager house by the family. Whilst there are 'gaps' in the known ownership of the Toulston site we know that a Sir Frederick Milbank resided at the Lodge in the early 1800s, during which time he was honoured by a visit from the then King, George IV, who is said to have dined at the Lodge.

In 1886 Henry Herbert Riley-Smith bought Toulston Lodge in preparation for his marriage to Annie Heaton. (Henry had taken the name Smith as a condition of jointly inheriting the John Smith's Tadcaster Brewery along with his brother Frank.) Henry extended and improved the house with modern fittings and decorations including the porch on the south front of the house where he placed his arms, carved in



# be your best self

stone, above it. He also commissioned the carved oak work in the dining room, inner and outer halls, and staircase together with the elephants - which are still in the house today - at the incredible total cost of £3,455 25s 0d.

The new school field on Wetherby Road (now the site of Tadcaster Riverside School) was acquired - at the time, there was a plan to relocate the school to the same neighbourhood, but that never came about.

Toulston Lodge and site was used by evacuees during World War II, but in 1954 West Riding County Council bought the lodge, its gardens and parkland covering a total of 70 acres, for £15,815. TGS Upper School then moved to Toulston Lodge, leaving the Lower School at the Leeds Road site.

After a new science wing, boys gym and main school building had been completed, the whole school moved to the current Toulston site with the official opening of Tadcaster Grammar School at Toulston taking place in 1960 officiated by the Archbishop of York.

*(Other secondary schools in the area were built in the 1960's, including those at Sherburn, Wetherby and Boston Spa.)*

By 1985, Tadcaster Grammar School was always one of the top comprehensive schools in North Yorkshire and among the best in the country. The headteacher, Mr Impey spoke of **'not being an exam factory, but a preparation for useful skills in life'** - something that we still believe today, and why we encourage all our students to **'be your best self.'**



1960



2024



In 1998 an additional science wing, the Oglethorpe and Dawson computer suite was built to accommodate the increasing number of students attending Tadcaster Grammar School.

In 2004 the large Independent Learning Centre (library) was added to the school, with the exclusive Sixth Form building established shortly afterwards, enabling our Year 12 and 13 students dedicated study areas.



**The STAR**  
MULTI ACADEMY TRUST

2018 saw Tadcaster Grammar School become an Academy: forming part of **STAR Mat** along with one other secondary school (Sherburn High School) and nine primary schools.

## CELEBRATING OUR HERITAGE WITH OUR 'HOUSE' SYSTEM

The House system has been in place at TGS since 1919 when the Headmaster, Mr A W Mason, introduced **Oglethorpe**, **Dawson** and **Calcaria** Houses for competitions in sport. Reflecting the schools history, these original three houses were later joined, by **Fairfax** and **Toulston** Houses.



Every student is part of a House and thanks to our fabulous House Champions we regularly hold activities and competitions where house points are awarded.

All the 'positives' that students receive contribute towards their House total. Each year, we are always amazed at how many thousands of positive points are awarded and how fiercely the Houses compete for the prized Mitchell Shield.



The Mitchell Shield was donated by Mr Geoff Mitchell who joined the TGS family as Headteacher in 1998, retiring in 2014.

## THE OGLETHORPE & DAWSON EDUCATIONAL FOUNDATION

Our founders schools set up by Owen Oglethorpe and Henrietta Dawson ran as two separate institutions supported by the Founders' endowments until, in 1906 they were amalgamated as Tadcaster Grammar School. The money to support the school initially came partly from the Founders' endowments and partly from fees paid by parents although, over time, financial support came from the local authority (at the time this was West Riding County Council).

After the Second World War, the local authority took full responsibility for supporting the school, leaving the Founders' endowments as a separate fund. The body which administers this fund is called **the Oglethorpe & Dawson Educational Foundation**.

### The role of the Foundation Governors

The Governors use income from the assets of the Endowment for making grants for various locally-related educational requirements, in both Tadcaster and its surrounding parishes.

Recently, the Oglethorpe & Dawson Educational Foundation have donated to Tadcaster Grammar School and its students:

- prizes for our School Celebration Awards and House Awards;
- the provision of items such as additional library books, computers and other IT related equipment and other departmental requirements not supported by central grants, whatever the source;
- support for individual students to assist in special circumstances, including out of school activities such as field trips and other visits supporting the curriculum as well as cultural, sporting and life enhancing activities.

In all cases, grants are made (subject to qualifying criteria) due to the financial circumstances of the student, however the grant doesn't cover the full cost but, providing a limited contribution.

# be your best self

A key example of the ongoing support The Oglethorpe & Dawson Educational Foundation Trust gives Tadcaster Grammar School and its community is the **'JustB'** initiative.

**JustB** is a specialist bereavement and emotional wellbeing support created to help children, young people and adults across the communities of North Yorkshire. They offer a safe space to talk about emotions such as grief, low mood and anxiety.



Thanks to The Oglethorpe & Dawson Educational Foundation Trust, Tadcaster Grammar School are privileged to have a number of counsellors and specialists that come in to school each week, allowing students requiring assistance over and above that which is normally available through the school. This initiative has been running for several years, and is well embedded within the school.

## OUR VISION & VALUES

As our school continues to thrive and grow, we take pride in honouring our long heritage with our **core values** of **ambition, resilience, respect** and **responsibility**, whilst constantly encouraging all students to strive to be their best self.

During their time with us at school, we want all students to maximise their potential through excellent academic and personal development.

We ask that each member of the Tadcaster Grammar School family should also be:

- aware of the needs of others in their thoughts and actions;
- empowered to control their own well-being;
- able to achieve fulfilment in their current and future lives.

**AMBITION**  
"to have a desire to achieve success"

**RESILIENCE**  
"to show a determination to achieve success"

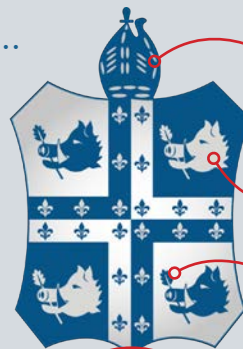
**RESPECT**  
"to be considerate to themselves and others"

**RESPONSIBILITY**  
"to take ownership for their actions and work, in and out of school"

## THE STORY BEHIND OUR LOGO...

The school was founded in 1557 by Owen Oglethorpe, the Bishop of Carlisle, to help underprivileged children learn to read and write. Until 1878, all headmasters were ordained clergymen.

(Our Year 11 students have a different tie to other students - their ties include the boars head with the barley along with a stripe in their house colour)



1557

**Tadcaster**  
Grammar School

A Bishops Mitre - gives reference to our founder, Owen Oglethorpe, who was the Bishop of Carlisle

Wild Boar were reared for meat and hunted in the local area

The stalk in the boars mouth is a thistle

1557 was at the end of the reign of Mary I (1553-1558), before Elizabeth I was crowned

# Discover more

## ABOUT TADCASTER GRAMMAR SCHOOL

### FORMS

All students across all year groups are placed in forms.

Forms are connected to our Houses - Calcaria, Dawson, Fairfax, Oglethorpe and Toulston. We have regular House competitions, usually across year groups, but sometimes involving other year groups which enable our younger students to get to know the older students.



Each form has their own form tutor(s) who move through the school with them (ie, from Year 7 to 8 etc). This helps students and their form tutor to develop a strong and trusted relationship.

The first period of each day is form time - this is where students have time with their form tutor or take part in assembly in the Main Hall. This time is when information on what is happening within their year or across school is shared (the Bulletin) or students cover additional support information such as SMSC, or enjoy DEAR time (drop everything and read). Every Friday, students are encouraged to take part in the weekly House quiz where points are awarded to the winning Forms.

### GETTING TO SCHOOL: SCHOOL BUSES

Whilst buses are not contracted by the school, we work closely with a number of transport providers to ensure services are available for all students.

North Yorkshire Council (NYC) and the City of York Council (CYC) contract services for students living in the school's catchment area (and more than 3 miles away) with registered bus operators. Students living more than 3 miles from Tadcaster Grammar School and who are in the normal catchment area of the school are provided with a FREE bus pass, either from CYC or NYC - they are allocated a designated bus on which to travel by the Local Authority.

*NB: earlier this year, the CYC removed the concessionary transport to Tadcaster Grammar School from Copmanthorpe, Bishopthorpe and surrounding areas for any new students from 2025. Current students will be entitled to this transport until they finish in year 11, however it was also agreed that siblings of current students would receive an allowance to cover the current cost (£495). This allowance will remain in place until the sibling who is entitled to free transport leaves the school at which time the allowance ceases.*

Unfortunately, NYC do not provide transport for local Tadcaster students living less than 3 miles from school and in the normal catchment area - this is therefore the responsibility of the parent(s). Transport is not provided by either Council for students living outside the catchment area of the school - transport is therefore the responsibility of the parent(s). There are a number of commercial bus services to school on which you can purchase single, return, weekly or annual mobile phone fares.

Up-to-date information on buses is available on our website. Scan this QR code or visit: [www.tgs.starmat.uk/parents/school-transport/](http://www.tgs.starmat.uk/parents/school-transport/)





## OUR SCHOOL DAY

Our students receive a rich and varied programme within Years 7, 8 and 9. Our 3 year KS3 programme is designed to ensure that our students ultimately leave school with strong skills and knowledge across all their subjects - including the ones they do not study at GCSE/VTQs.

We operate a two week timetable which enables greater flexibility to timetable lessons, and allows the provision of a broad range of subject choices and enhances the learning experience for all subjects. In Year 7, this coverage includes each of the following:

Six hours per fortnight	Four hours per fortnight	Three hours per fortnight	Two hours per fortnight
English Mathematics Science	Physical Education	Geography History French German	Art Computing Design Technology Drama Food & Textiles Technology Life Skills Music Religious Education

*Please note: apart from Mathematics, where broad setting takes place and PE where some students are grouped based upon their ability within specific disciplines, all other subjects are taught in mixed ability teaching groups in Year 7. We believe that this structure eases the transition from Key Stage 2 and reflects our ethos and values.*

All students have 32.5 hours a week in school, plus extra curricular activity time after school or at the weekends (for more information about our optional extra curricular activities please refer to 'LEARNING BEYOND THE CLASSROOM' on the following pages).

**Homework** is used to consolidate students' learning and follows what has been covered in lessons. When homework is set, all students are given realistic time-scales for the work to be completed.



Full curriculum and subject lesson details are on our website, please visit: [www.tgs.starmat.uk/curriculum-overview/](http://www.tgs.starmat.uk/curriculum-overview/) for more information, or scan this QR code:

## SCHOOL TIMES

Our school day commences at 8.40am for all students with form time. Form time is followed by 5 lessons of 1 hour each. Lessons are timetabled on a two week rotation and lessons in week 1 are different to those in week 2 - students very quickly adapt to this timetable pattern.

The table (left) highlights the number of hours per fortnight students have each subject.

### School Times for Years 7 to 11

Period 1/form - 8.40am to 9.05am  
 Period 2 - 9.05am to 10.05am  
 Period 3 - 10.05am to 11.05am  
*Break - 11.05am to 11.30am*  
 Period 4 - 11.30am to 12.30pm  
*Lunch - 12.30pm to 1.10pm*  
 Period 5 - 1.10pm to 2.10pm  
 Period 6 - 2.10pm to 3.10pm

### School Times (Sixth Form) is

Period 1/form - 8.40am to 9.05am  
 Period 2 - 9.05am to 10.05am  
 Period 3 - 10.05am to 11.05am  
 Period 4 - 11.05am to 12.05pm  
*Lunch - 12.05pm to 1.10pm*  
 Period 5 - 1.10pm to 2.10pm  
 Period 6 - 2.10pm to 3.10pm

# Experiences & support

FOR ALL STUDENTS THROUGHOUT THEIR TIME WITH US...

## LEARNING BEYOND THE CLASSROOM

We are very fortunate to have such **vast grounds** (the largest in all of NYCC schools) and we are very proud that so much land offers great sporting opportunities.



In addition to our recently refurbished gymnasiums, we make full use of **numerous hockey, football and rugby pitches, seven tennis courts, a cricket square, hard-surface athletics track and a full-sized floodlit astro-turf pitch.**

**Our woodland area** also provides opportunities for cross country running and orienteering. We host many area and County trials or matches.

It is hardly surprising that Tadcaster Grammar School enjoys a reputation for successful sporting achievements each year - our students have gained many honours in recent seasons at District, County and National Championship

level. Lewis Cook (Bournemouth FC and England), Charlie Taylor (Burnley FC) and Emma Coates (Lioness U23 Head Coach) are former students that have gone on and furthered their careers in the professional game.

**Enrichment opportunities** are a strong feature of Tadcaster Grammar School. We offer students an extensive selection

of activities beyond the curriculum - these take place at lunchtimes, after school, at weekends and, in the case of some residential visits, during the school holidays. Students in Years 7 to 11 remain on site throughout the day, therefore our lunchtimes are particularly active with many of our clubs and sports practices taking place at this time. All students are encouraged to participate in a broad spread of interests: Opportunities include:

- Art club
- Drama club
- A wide range of music bands, orchestras and choirs
- Various foreign language clubs, including French pen-pals
- Geography club
- History club
- Homework club
- A wide range of sports clubs such as football, rugby, hockey, netball and athletics
- UK Maths challenge

We also offer a number of educational visits in the UK and abroad such as the Year 7 whole year residential which is a great for widening friendship groups.

Other educational visits in addition to theatre visits supporting English or Drama lessons, include:

- Watersports in France, Italy or Spain (Year 8)
- Skiing (Years 9 & 10)
- French or German markets (Year 10)



- Battlefields (History, Year 10)
- Rome (RPE, Years 10-13)
- Edinburgh (Art, Years 10/11)
- Lessons from Auschwitz (Year 12, participants chosen via a selection process organised by The Holocaust Society)



We also run an **Enrichment Week** where (during the usual school day) all year groups have the opportunity of an introduction to new skills (such as Japanese, or sign language), discover different cultures and have team building visits out of school. These have been popular with students in the past and we look forward to more exciting activities in the future.



For more information about the wide range of fabulous extra-curricular activities available to all students in every year group and Enrichment Week, please scan the QR code or visit our website ([www.tgs.starmat.uk/prospectus/learning-beyond-the-classroom/](http://www.tgs.starmat.uk/prospectus/learning-beyond-the-classroom/))



*\*Please refer to page 15 for more information on Musical Tuition*



## STUDENT SUPPORT

We understand that the move from primary to secondary school can be daunting for many students.

Tadcaster Grammar School have a superb network of staff who are dedicated to helping all students settle into life at our school, particularly those who may need a little extra support.

Tadcaster Grammar School is committed to providing a caring, positive and safe environment in which each student's welfare is of paramount importance. We promote a climate where students and adults feel confident about sharing any concerns which they may have about their own safety or the well-being of others and a culture that encourages our young people to talk openly, and have the confidence they will be heard.

### Support for all students:

Young people's wellbeing is so vitally important. We have an amazing team of staff available to support our students.

Our qualified team are available to all students and their parents/carers whether they have special educational support requirements, need additional guidance on - or a little help with - navigating friendships, or students who just need someone they can talk to.

We have access to outside support agencies such as CAHMS, Just B (Bereavement Support) and Wellbeing-in-Mind.

*be your best self*

# Joining

THE TADCASTER GRAMMAR SCHOOL FAMILY

## TRANSITION FROM PRIMARY SCHOOL

We have excellent and well established relationships with the primary schools within our catchment area and beyond.

Following the whole school Open Event in October and the Headteacher information sessions at primary schools, we are available to answer any queries you may have.

Once you receive notification from your Local Education Authority that you have been awarded a place at Tadcaster Grammar School, we are able to share additional information with you to support you and your child.

We do our best to ensure that we meet with every student before they join us and we have established a first class sequence of acquaintance and familiarisation visits, including dedicated transition days for Year 6 with a Parents' Evening in July.



When the Year 7 students join us in September the transition is, for the majority, to an already familiar environment. The high quality of data available from Key Stage 2 means that our staff are able to focus on the learning needs of all students from the very beginning of their time at Tadcaster Grammar School.

*Please note: additional transition events are offered to sole entry students and vulnerable learners.*

For more information about our joining our school, please visit our website: [www.tgs.starmat.uk/transition/](http://www.tgs.starmat.uk/transition/) or scan this QR code:



## CHROMEBOOKS FOR LEARNING

Whilst traditional methods of learning and teaching have an important place in education and continue in our school, Tadcaster Grammar School has a well established *Chromebooks for Learning* scheme, as an additional educational tool. All students are required to have access to a chromebook throughout the school day.

In order to facilitate this, the school has partnered with an educational ICT supplier, who offer a device which is suited to use in a school environment.

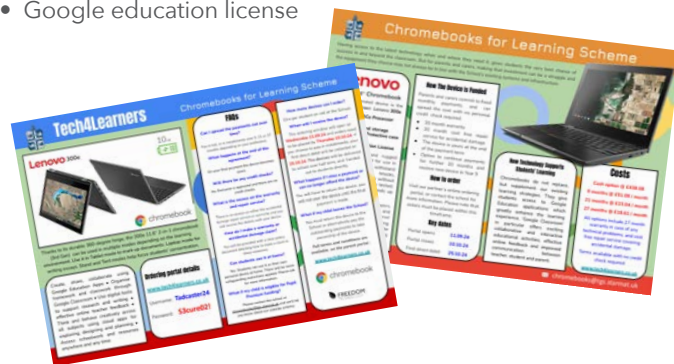
This supplier also arranges a 30 month extended warranty and free repair service for any accidental damage for the 30 months of the scheme.



Alternatively, parents/carers can choose to source their own Chromebooks to the same specification (shown opposite), however in order for the device to be used in school a Google Classroom license is required which is installed by our IT team (*the cost Google charge for this license is currently £26 and is payable to school prior to installation*).

### The specification of the recommended Chromebook:

- Touchscreen Lenovo 300e 11.6" Chromebook
- AMD 3015Ce processor
- 4GB RAM
- 32GB internal storage
- Protective carry case
- Stylus
- Google education license



This is a robust and rugged Chromebook designed for use in education. Built to withstand everyday classroom knocks, bumps, drops and spills without damage. The extensively tested impact-resistant body stands up to daily wear and tear.

It also boasts rubber bumpers, reinforced ports and hinges, and secure mechanically anchored keys. With its school day-long battery life, students can be certain of uninterrupted learning without worry.

For additional information, and current costings, please refer to our website: [www.tgs.starmat.uk/parents/chromebooks-for-learning-scheme/](http://www.tgs.starmat.uk/parents/chromebooks-for-learning-scheme/)



*be your best self*

# Additional

## INFORMATION FOR ALL STUDENTS

### SCHOOL UNIFORM

Our uniform promotes a sense of community and belonging to the school, while engendering a sense of pride in, and loyalty to, the school.



To view our uniform policy and for full details relating to our expectations of all students, please scan this QR code or visit our website:  
<https://tgs.starmat.uk/parents/uniform/>



Uniform can be purchased from our nominated supplier - **APC Clothing** in Tadcaster. **The Barn** also stocks pre-loved uniform - please contact them directly for opening times.



### CATERING

North Yorkshire County Council attaches great importance to the provision of meals in their schools, and recognises that menus should be both healthy and popular.



Our fabulous catering team make fresh food every day, with good quality fresh ingredients. There is always a selection of salad, vegetables and fruit to accompany main dishes. Whether students are looking for a snack, sandwiches, a main meal, or a sweet treat there's plenty to choose from.

To view sample menus, please scan this QR code or visit our website:  
[www.tgs.starmat.uk/parents/school-catering/](http://www.tgs.starmat.uk/parents/school-catering/)



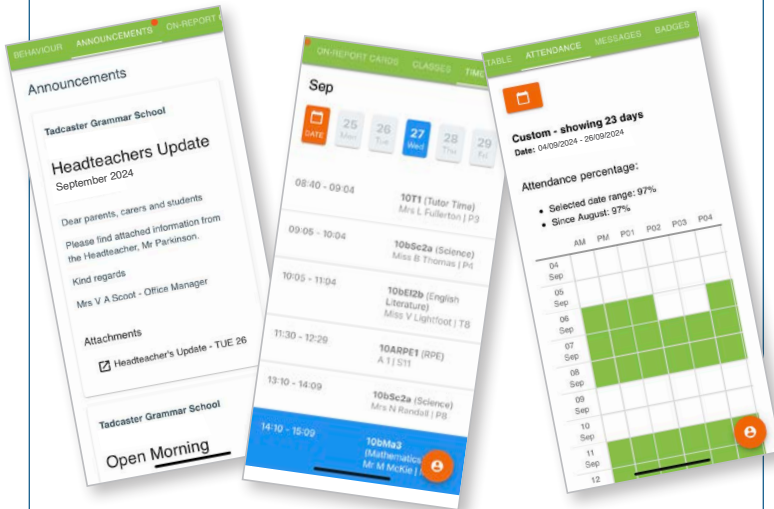
We operate a cashless system in the canteen so students can pay for food with their fingerprint with parents/carers making payments to their accounts via ParentPay. *(Details on how this works, and how to set up accounts are forwarded after you have accepted your place.)*

All schools have a statutory duty to support students with medical conditions - including allergies. Tadcaster Grammar School works hard to ensure conditions are managed/catered for - we have dedicated gluten-free and meat preparation areas to avoid any cross contamination. We also display

allergen information for the food available each day, and students are encouraged to speak with the catering team if they are unsure whether an item of food is suitable for them.

## CLASS CHARTS

As a school we subscribe to the Class Charts application. This allows us to share with students and parents key information such as important announcements, student timetables, class information, attendance, key messages, and behaviour.



## POSITIVES & NEGATIVES

We believe regular feedback to students is vitally important and helps them continue to grow and improve, and strive to achieve our core values and visions.

In addition to feedback relating directly to their work, students are awarded POSITIVES for elements such as:

- Ready to learn from 'the off'
- Being 100% on task at all times
- Giving a fantastic answer
- Positive involvement in a class discussion
- Great recall, retrieval or revision
- Safe practical work
- Outstanding presentation

Unfortunately, it is sometimes necessary to highlight to students that behaviour or actions are not acceptable; this is part of our Ask, Tell, Sanction approach. Students are asked to do (or stop doing) something, if this doesn't happen they are then told and when, on the rare occasions the student chooses not to make a change to their behaviour a NEGATIVE is awarded.

In rare situations where the student continues to act in a certain manner, despite being given the opportunity to correct their actions, a detention may be given.

Every student is given a Class Charts log in for use on the App that can be downloaded to a mobile phone. Parents also receive log in information so you can support your child to ensure they are prepared for the following day, have the correct equipment each day, and of course you can congratulate them on their positives.

*Full details of the Class Charts application will be shared with families when they join us.*



*be your best self*

## ATTENDANCE

At Tadcaster Grammar School we want our students to maximise their potential through excellent academic and personal development. We set high expectations for attendance and know that student attainment and achievement depends on regular presence in school.

Having excellent attendance and punctuality is a life skill that will prepare your child for their future in every way. When your child attends school regularly and on time, they will be accessing the best opportunities that our school can offer, learn new skills and increase their chances to leave school with better qualifications and access to better employment opportunities in their future.

Of course we would like all of our students to aim for 100% attendance during the academic year. However, **we understand there are genuine reasons for absence such as illness, appointments and exceptional circumstances.**

*We are always here to help should you have any concerns about attendance. Please contact Form Tutors, Year Leaders, Pastoral Leaders or our Attendance Team.*

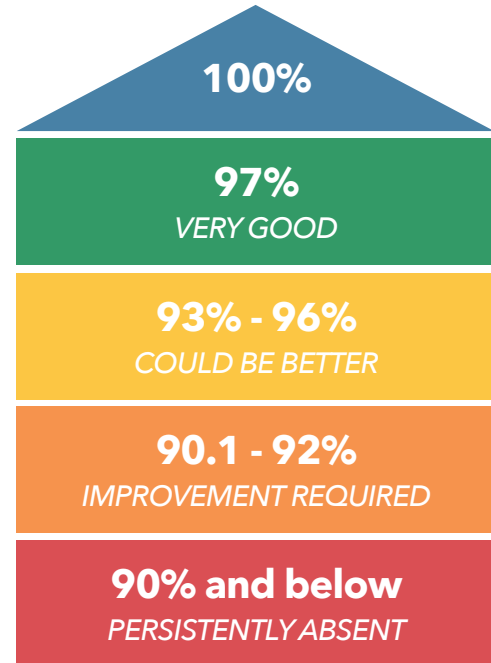
We recognise and reward students who have excellent attendance, and also those students who commit and work hard to improve their attendance during the school year.

*Every  
day  
counts!*

**Attend everyday**

**Aim high**

**Achieve tomorrow**



### Absence during term time

**HOLIDAYS:** Parents/carers must seek permission from the Headteacher in order to take their child out of school. Holidays are not permitted during term time. Taking holidays in term time means your child can quickly fall behind with their work and could result in a Fixed Penalty Notice being issued by the Local Authority.

**MEDICAL APPOINTMENTS:** Where possible, medical appointments should be taken outside of school hours. We understand that in certain situations this is not possible and would ask that parent/carers email [attendance@tgs.starmat.uk](mailto:attendance@tgs.starmat.uk) with details of the appointment at least 24 hours in advance.

Our Attendance Policy can be viewed on our website: ([www.tgs.starmat.uk/school-information/policy-documents](http://www.tgs.starmat.uk/school-information/policy-documents)).



## ACCESSIBILITY ARRANGEMENTS

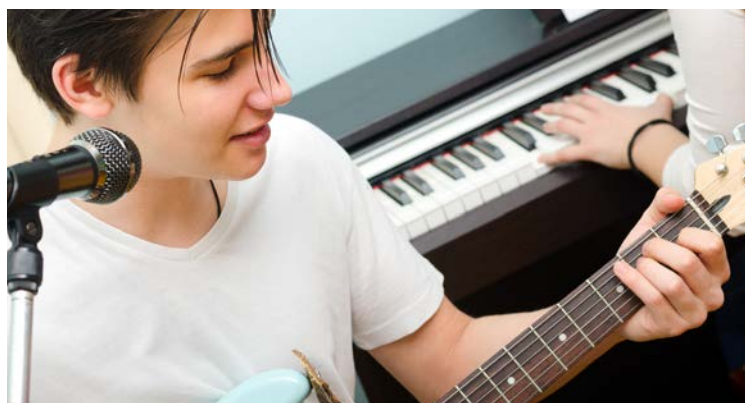
As a school we are committed to increasing access to the school for students, staff, parents, governors and visitors.

We have an Accessibility Plan (available on our website [www.tgs.starmat.uk/school-information/policy-documents](http://www.tgs.starmat.uk/school-information/policy-documents)) which has been written in accordance with the planning duty under the Special Education Needs and Disability Act 2001 (SENDA) and updated with regard to the Equality Act 2010.

*Please contact school for more information or to discuss your child's' specific requirements.*

## MUSICAL TUITION

We have several very popular extra-curricular ensembles that all students are welcome to join including: Jam Club, Concert Band, Big Band and Pop Choir. These ensembles all have the opportunity to perform each term at our very popular seasonal showcase concerts.



In addition to core curricular music lessons, we use the North Yorkshire Music Hub for additional instrumental and vocal lessons. Lessons are individual or group sessions lasting 20 or 30 minutes and are delivered by a team of specialist teachers. In addition to vocal/singing lessons we are proud to be able to offer lessons in the following instruments: trumpet, trombone, violin, viola, cello, flute, clarinet, saxophone, oboe, guitar, ukulele, drums and piano.

Full details, prices (including details of discounts for various levels of income) are available on the North Yorkshire Music Hub website ([www.northyorkshireremusicHub.co.uk](http://www.northyorkshireremusicHub.co.uk)).

*\*Please note: any students receiving Pupil Premium funding can receive additional financial support for any lessons.*

*be your best self*

# And finally...

## POLICIES

As part of STARMat we adhere to their policies - these can be viewed on the STARMat website: ([www.web.starmat.uk/policies/](http://www.web.starmat.uk/policies/))

We also have a number of our own policies which can be viewed on our website, please scan this QR code, or see: [www.tgs.starmat.uk/school-information/policy-documents/](http://www.tgs.starmat.uk/school-information/policy-documents/)



If you require a copy of any of our policies in a different format (ie Large print or audio) please contact us.

## TERM DATES

As a North Yorkshire County Council School, we are guided by the term dates they set for all their schools, however we plan five key training days throughout the school year.

All our term dates and training days for the current and next academic years are published on our website.

Please scan this QR code or visit: [www.tgs.starmat.uk/parents/term-dates](http://www.tgs.starmat.uk/parents/term-dates)



## WHAT TO DO NEXT

Thank you for taking the time to consider our wonderful school. If you would like any more information, please don't hesitate to contact us either by phone: 01937 833446, or by email: [transition@tgs.starmat.uk](mailto:transition@tgs.starmat.uk) and we will be delighted to answer any questions you may have.

Once we have received confirmation from NYCC that your child has been allocated a place at Tadcaster Grammar School, you will receive a welcome email with information regarding our various transition events, and welcoming you to the Tadcaster Grammar School family at the start of this new and exciting journey into secondary school.

### Key dates:

***Applications for September 2025 entry*** (Year 6 to 7 transition) should be made by **31st October 2024**.

If you are moving in to the area you may need to supply proof of your new address (eg mortgage or rental agreement, or deeds to the property, or, to prove that you will be living in the area before the start of the next school term.

**Allocated places are released to parents/carers on 1st March 2025.**

If you live within North Yorkshire, you do not need to confirm your acceptance of a place at Tadcaster Grammar School. If you live in West Yorkshire, we ask that you contact the school to confirm your child/children will be joining Tadcaster Grammar School.

***We look forward to you joining the TGS community!***



WORLD  
LAND  
TRUST™

[www.carbonbalancedprint.com](http://www.carbonbalancedprint.com)  
CBP2244

Tadcaster Grammar School aims to be as environmentally conscious as possible. As part of our commitment, this prospectus has been printed on Carbon Balanced Paper. For more information about the Carbon Balanced Paper initiative, please visit [www.carbonbalancedpaper.com](http://www.carbonbalancedpaper.com)

*be your best self*

We offer all students  
**so much more**  
than an  
**outstanding education.**



1557

Tadcaster  
Grammar School



Tadcaster Grammar School : Toulston : Tadcaster : North Yorkshire : LS24 9NB  
t: 01937 833466 : e: transition@tgs.starmat.uk : w: www.tgs.starmat.uk